

# Key considerations for Expanding COVID-19 Capacity to the subnational level

*Marguerite Massinga Loembé, MSc, PhD*

*Senior Laboratory Advisor,  
ASLM and Africa CDC*

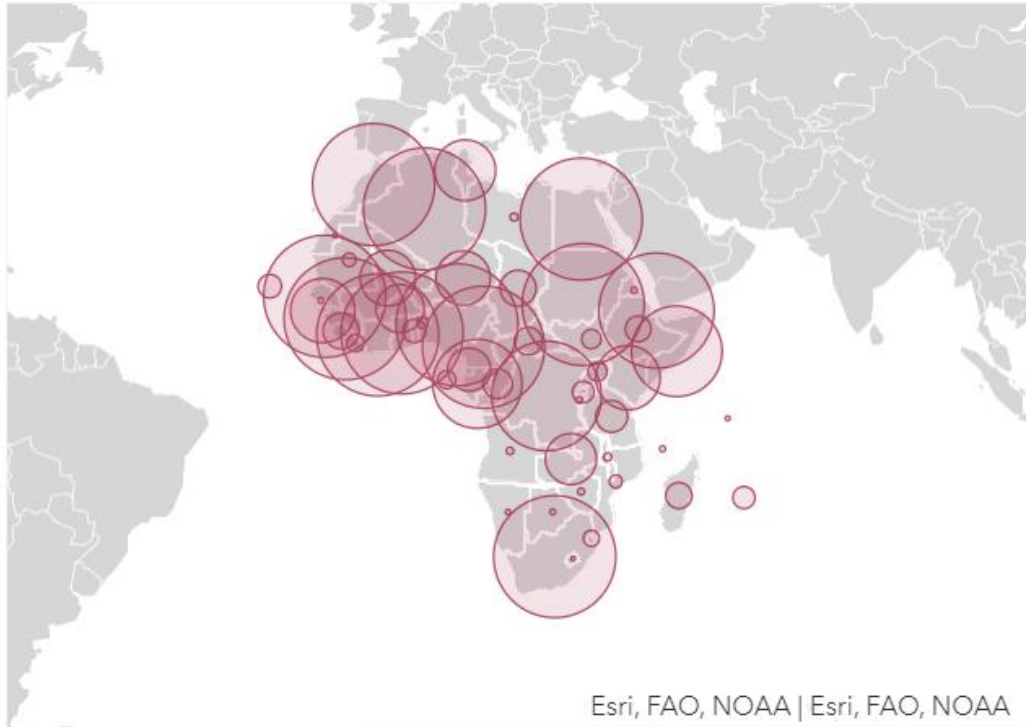


Last Updated: 22 mai 2020

Cases  
**99 062**

Deaths  
**3 082**

Recoveries  
**39 085**

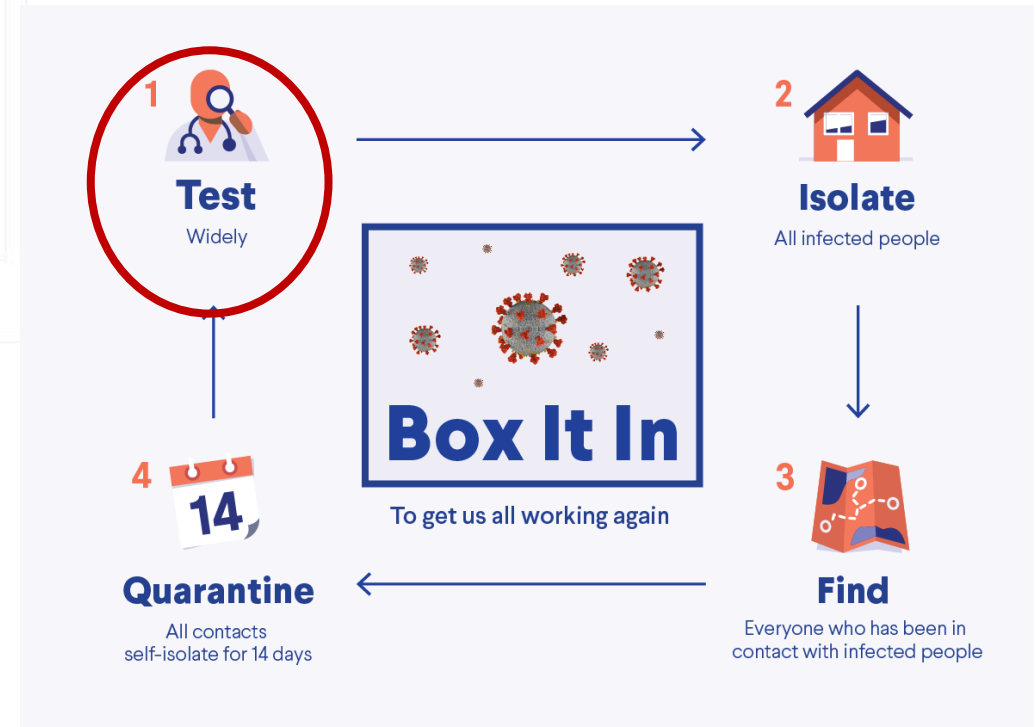


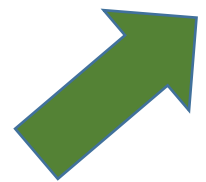
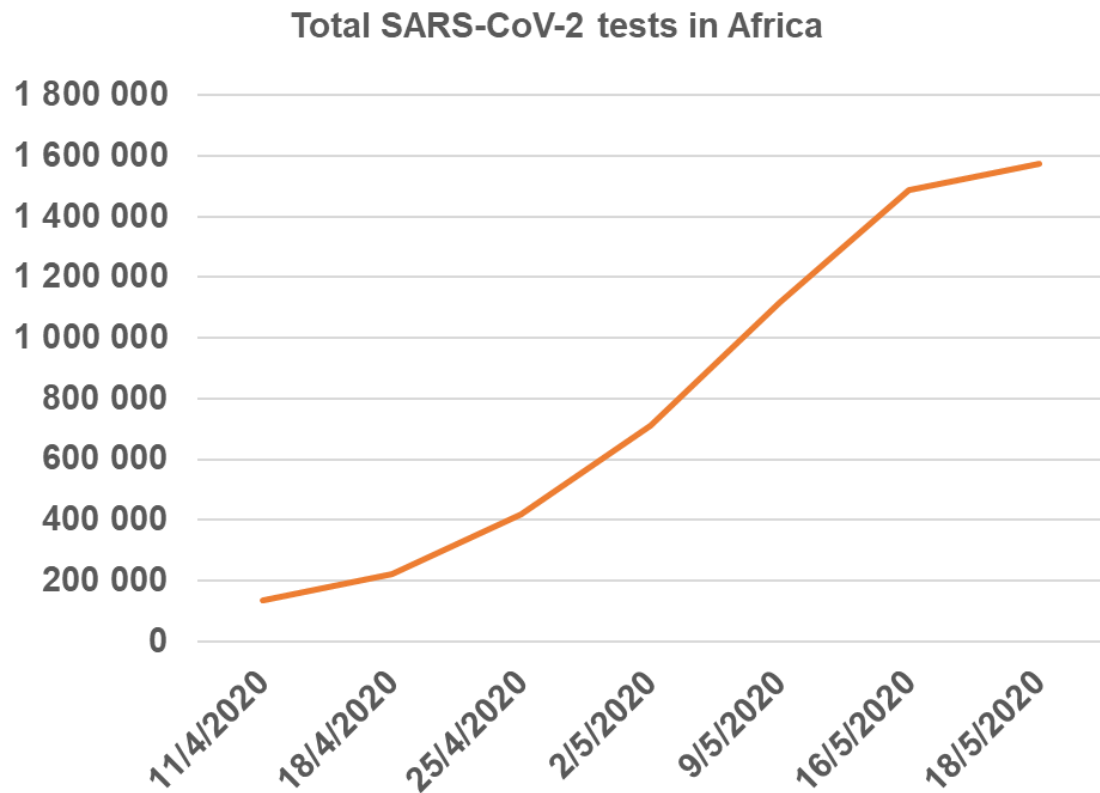
Map of Cumulative Cases

Légende de la carte

Citation

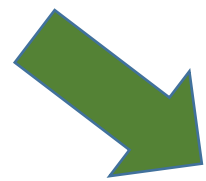
# COVID-19 in Africa





**Total estimated testing capacity**

**45 M**

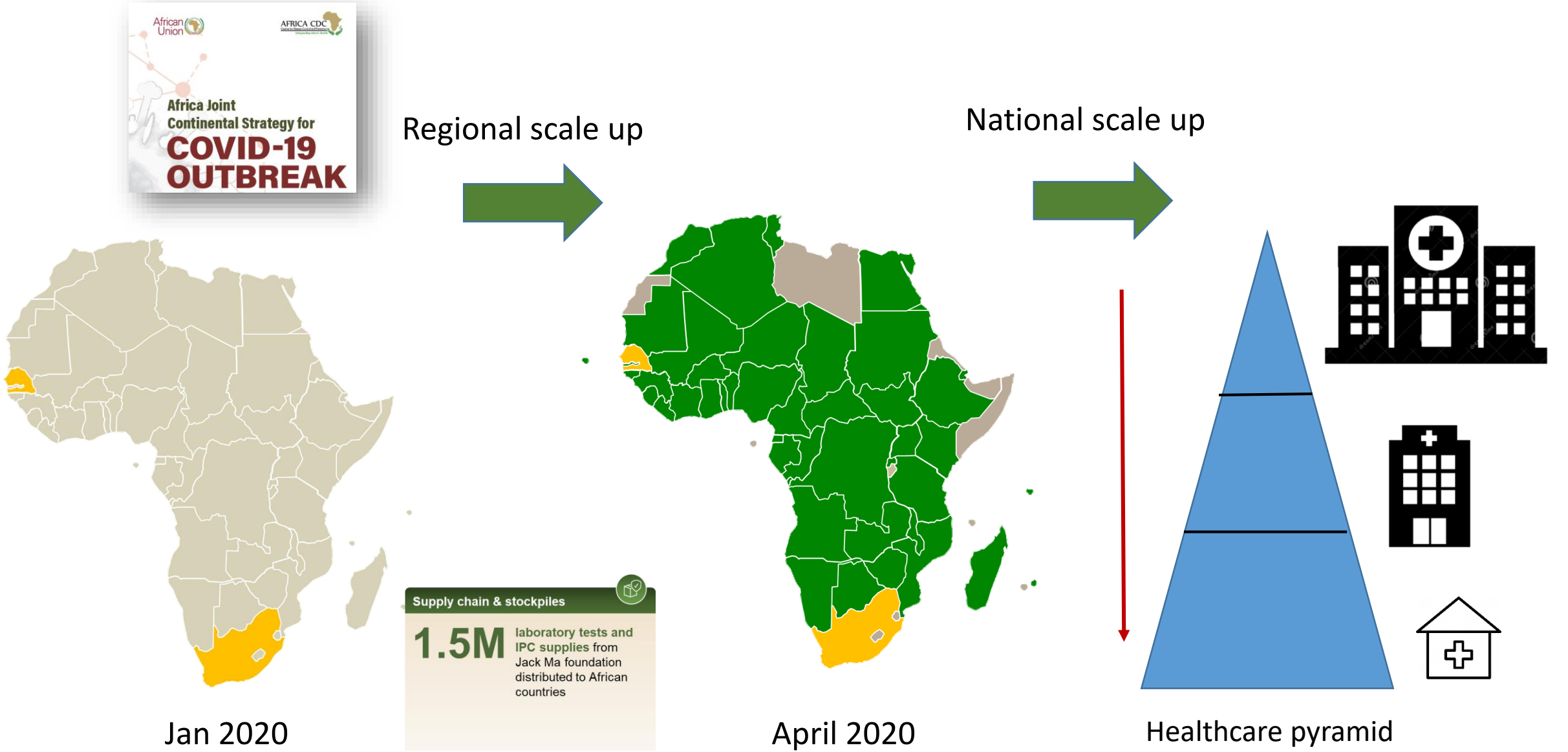


**PACT Initiative**

**Partnership for Accelerated COVID-19 Testing**

Test **10 M** people in the next 6 months

# Need to scale up diagnostic capacity



African Union  
AFRICA CDC  
Africa Joint Continental Strategy for **COVID-19 OUTBREAK**

Regional scale up

National scale up

Supply chain & stockpiles  
**1.5M** laboratory tests and IPC supplies from Jack Ma foundation distributed to African countries

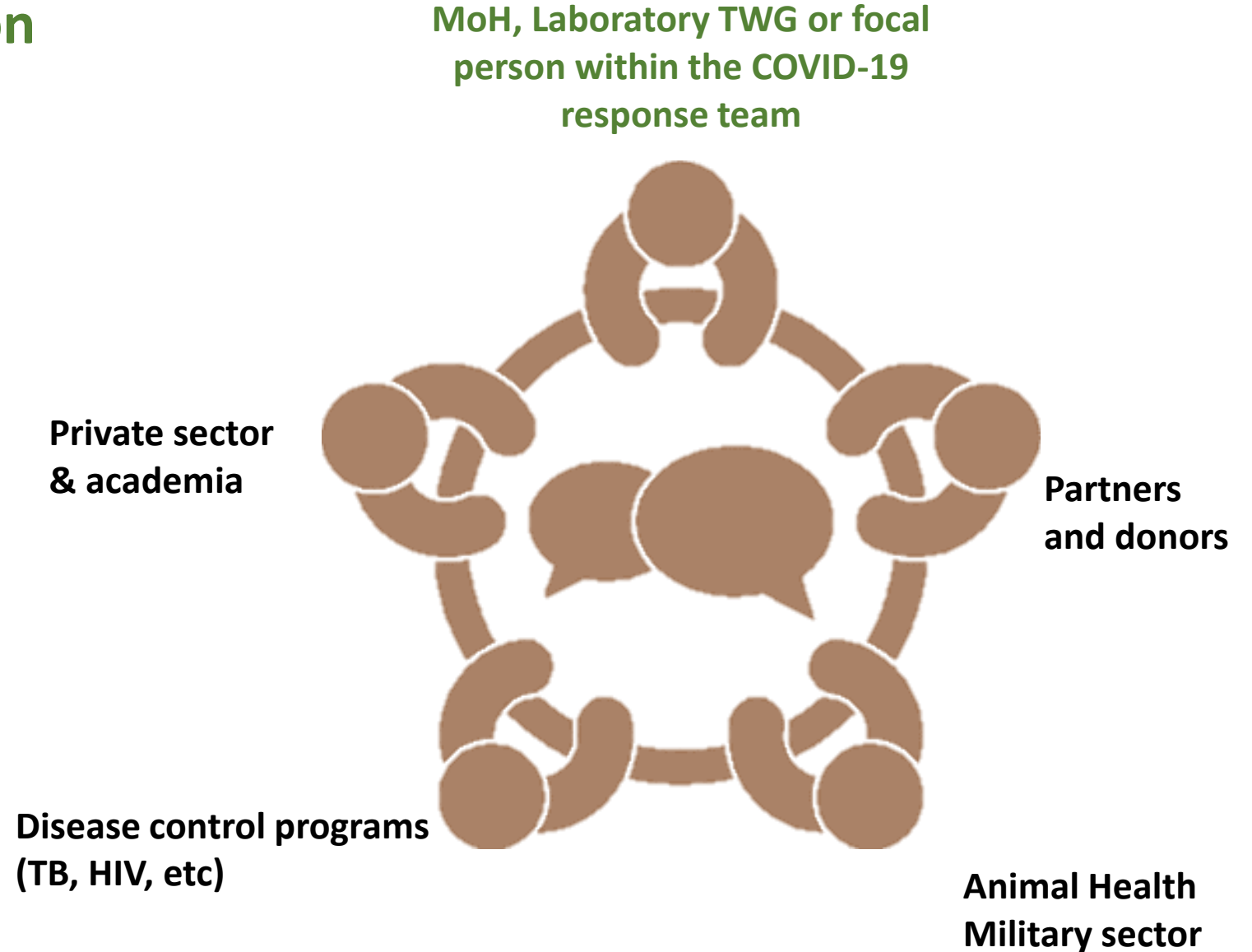
Jan 2020

April 2020

Healthcare pyramid

## Governance and coordination

- Multi-sectoral approach
- Include all stakeholders
- Leverage existing capacity and lab strengthening efforts
- Scale up roadmap



## Existing capacity

- **Infrastructure**

- **Equipment footprint**

(conventional RT-CR, high-throughput and/or automated plate-forms)



- **Specimen transport networks**

## Needs

- **Geographic coverage**

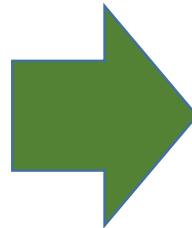
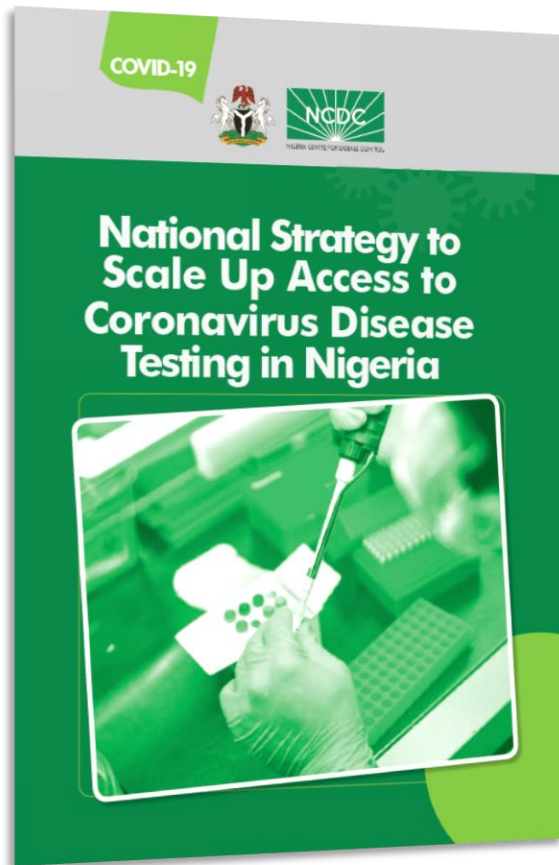
(everyone, everywhere in the country)

- **Testing volume**

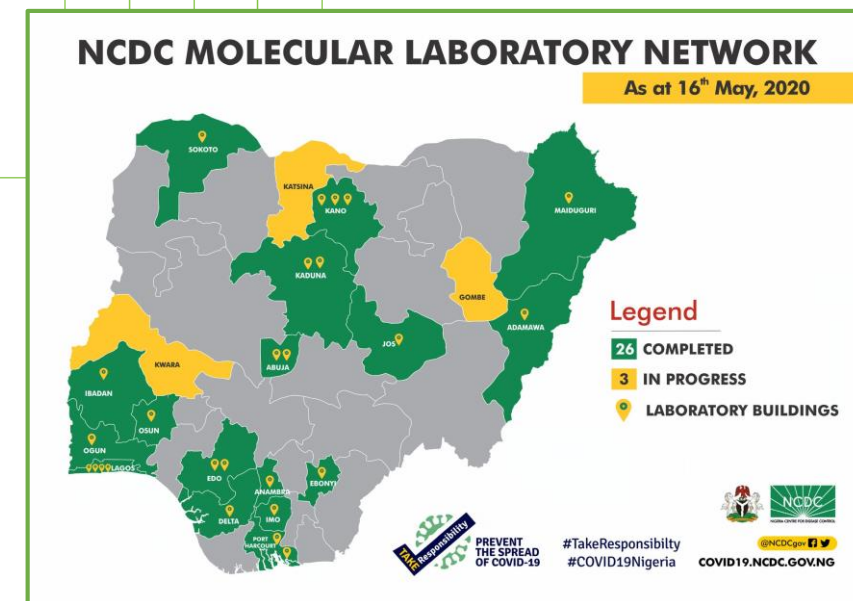
- **Testing algorithms**

(**what test ? where? for whom ?**)

# COVID 19 testing scale up strategy (1): expand laboratories

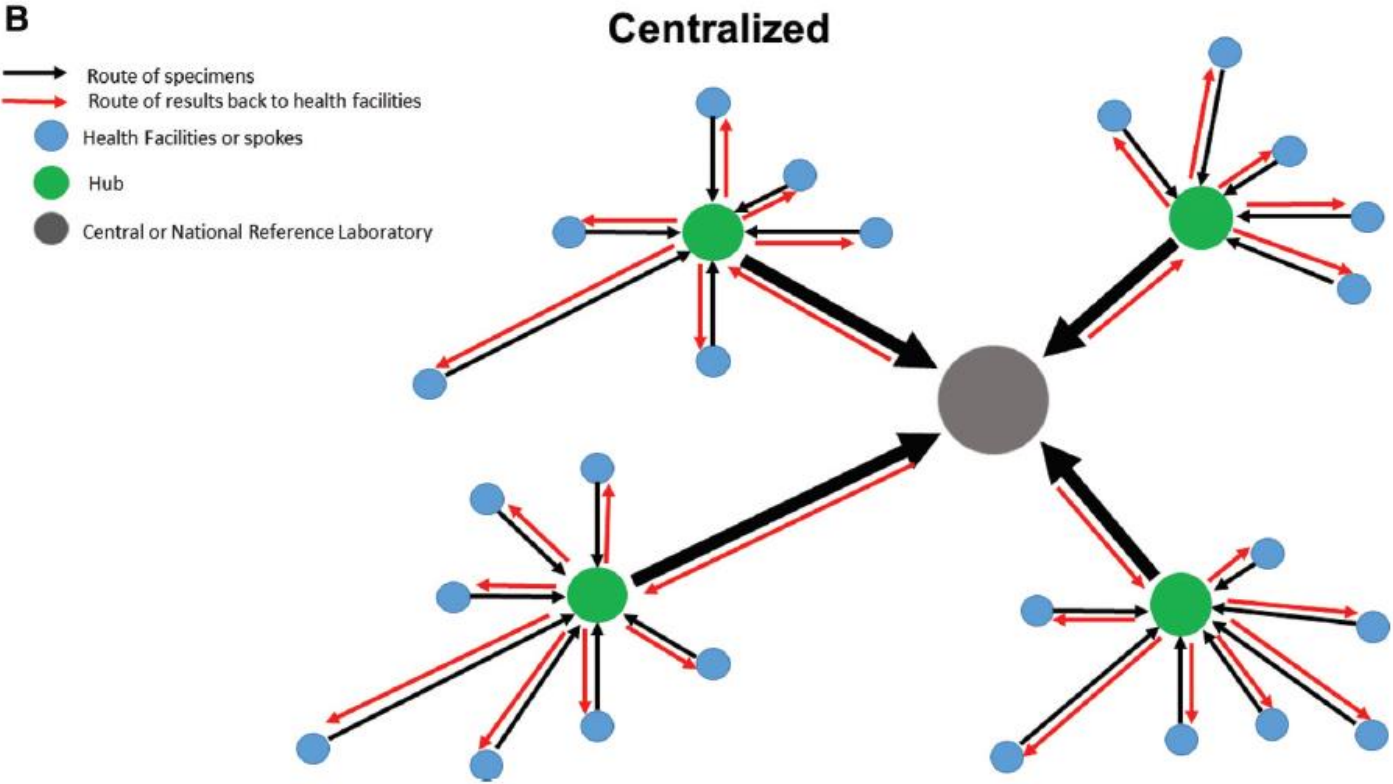


	CONTAINMENT	TRANSITION	LOCALISED	WIDESPREAD	WANING
<p><b>Expand existing NCDc laboratory network for molecular RT PCR</b>                      Expand from 9 to 15 laboratories in a 30-day period.                      Increase national capacity to 1500 tests/day nationally</p>	✓	✓	✓	✓	✓
<p><b>Leverage capacity within high-throughput HIV molecular testing laboratories</b>                      Expand from 0 to 6 Mega-PCR laboratories in Lagos, FCT, Benue, Akwa Ibom, and Anambra states, in a 30-day period.                      Increase combined national capacity to a minimum of 5,000 tests per day across the country</p>		✓	✓	✓	✓
<p><b>Utilise point of care tuberculosis testing GeneXpert machines for COVID-19 testing</b>                      Add 41 new processing sites in 30 days                      Increase combined national capacity to a minimum of 7,000 tests per day across the country</p>					

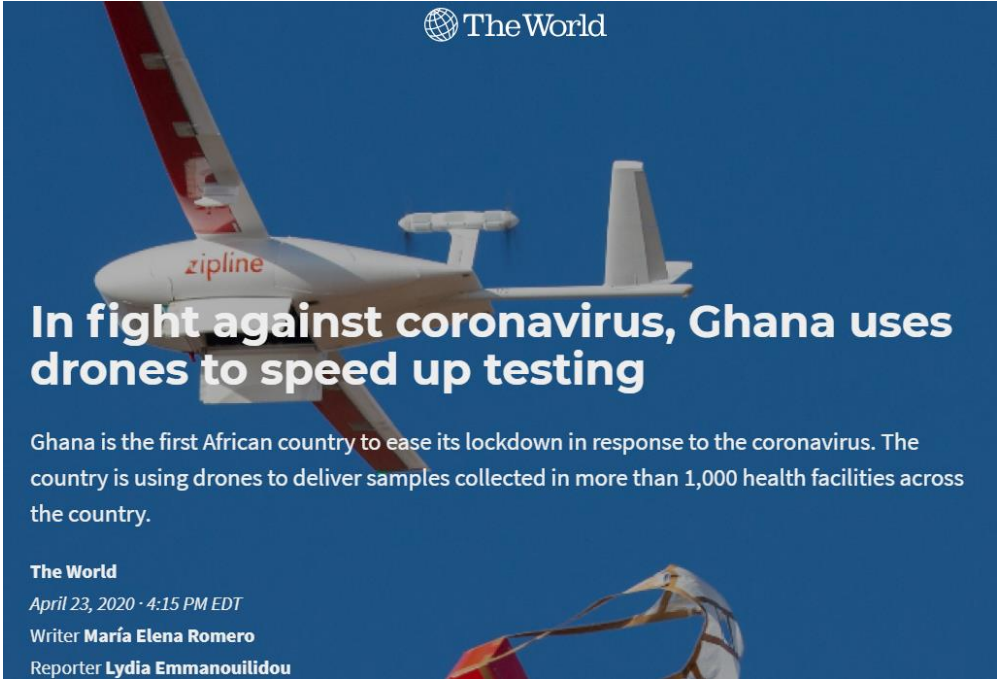




# COVID 19 testing scale up strategy (2): expand referral

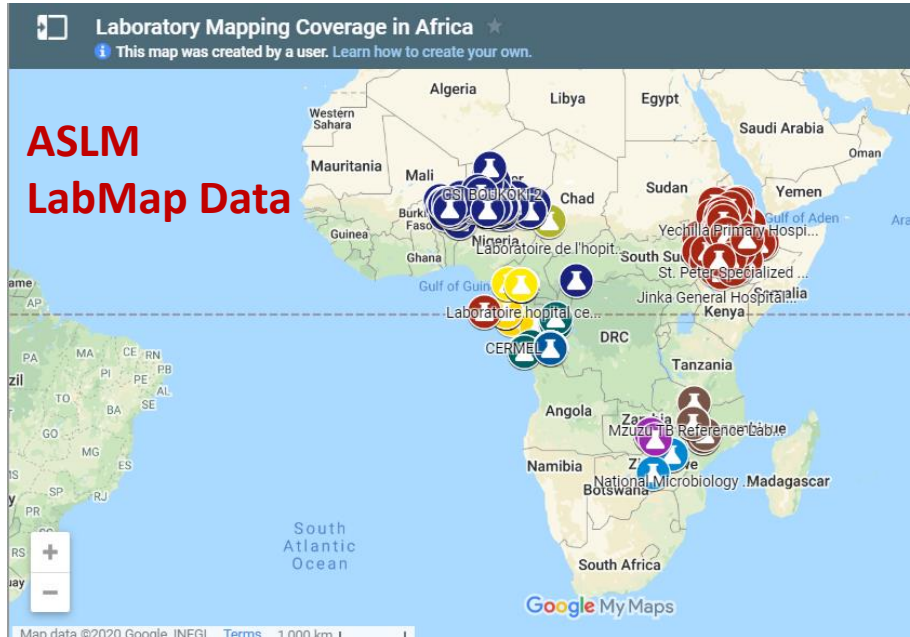


Reference: Fonjungo et al, CID, 2017:64





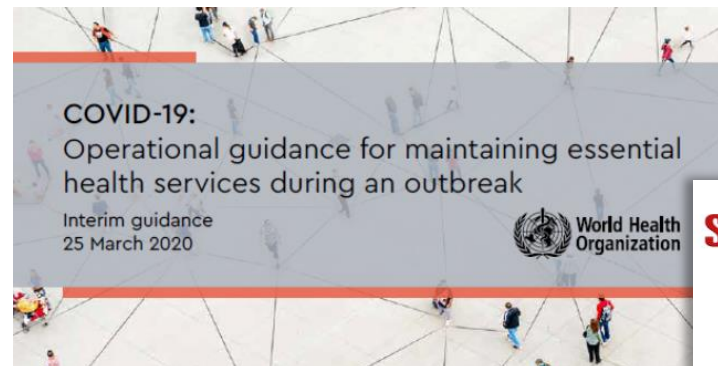
# Assess and select sites



- Proximity to treatment centers / transmission hotspots
- Infrastructure and equipment
- Human resources
- Biosafety
  - RT-PCR : BSL-2 (biosafety cabinet)
  - POC or near POC : BSL-1
- **Free testing capacity (TB and HIV equipment)**



WHO assessment tool for COVID-19 laboratories



➔ Ensure maintenance of essential testing service for non COVID-19 diseases

**Stop TB Partnership**

Considerations for selection of SARS-CoV-2 diagnostics and potential multiplexing:  
A perspective to ensure continuity of care for people with TB

14 May 2020

# Prepare sites for routine operations

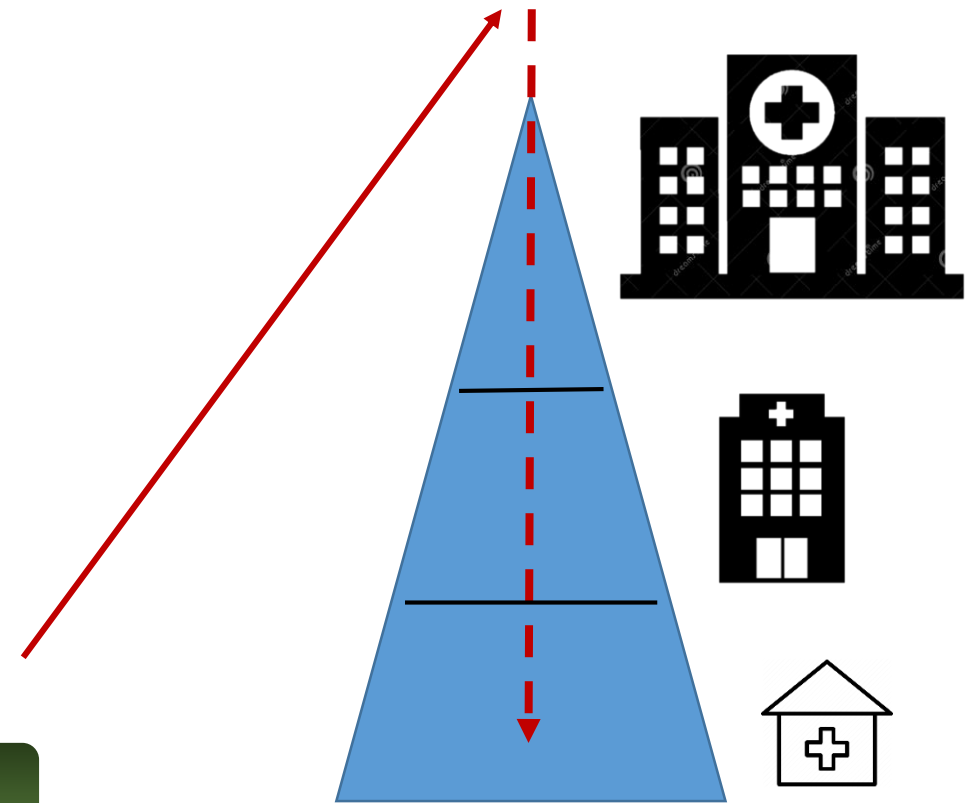
- Provide guidance (testing algorithm and protocols)
- Provide documentation (SOP, registers..)
- Upgrade equipment (ie: software upgrade)
- Train staff and **assess competency**
- Forecast supply chain (reagents and consumables)

## ACCESS TO COVID-19 TOOLS (ACT) ACCELERATOR

A Global Collaboration to Accelerate the Development, Production and Equitable Access to New COVID-19 diagnostics, therapeutics and vaccines

COMMITMENT and CALL TO ACTION

PACT Initiative



Healthcare pyramid

# Follow and monitor new testing sites

- Define KPI (nb tests, nb of positive results, etc)  
➔ **Inform supply chain forecasting and procurement**
- Organize supervision (onsite or remotely):
  - early identification of possible issues and corrective actions
  - Inform further expansion
- Ensure participation in national EQA program
  - simplified options: retesting, rechecking



Quality assured testing

# Summary

**What ?**

Extension planning

Testing sites selection

Testing sites installation

Routine testing operations

**How ?**

-Governance framework

-Extension roadmap

-Supply chain forecasting

-Facility assessment checklist

-Documentation (SOP, registers etc..)

-Equipment installation

-Staff training

-Competency assessment

-Routine testing

-Supervision

-EQA

-Corrective actions/ re-training

**Whom ?**

Laboratory TWG

Central lab & partners

Central lab & partners

Central lab & partners

**Thank you**